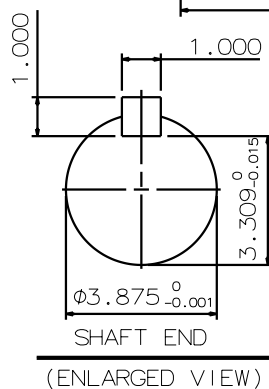
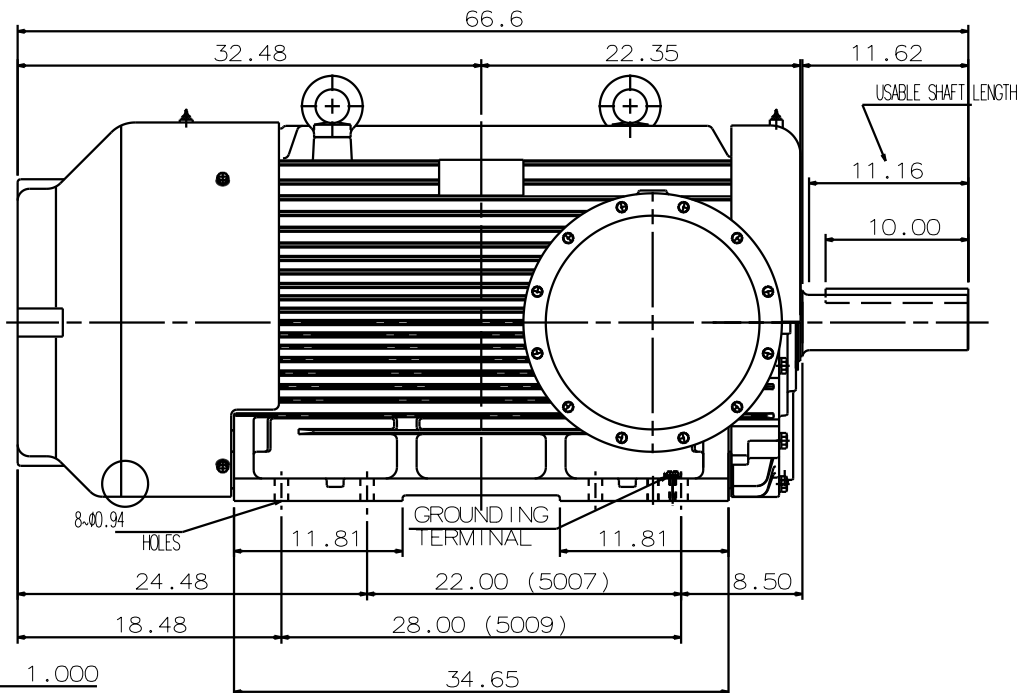
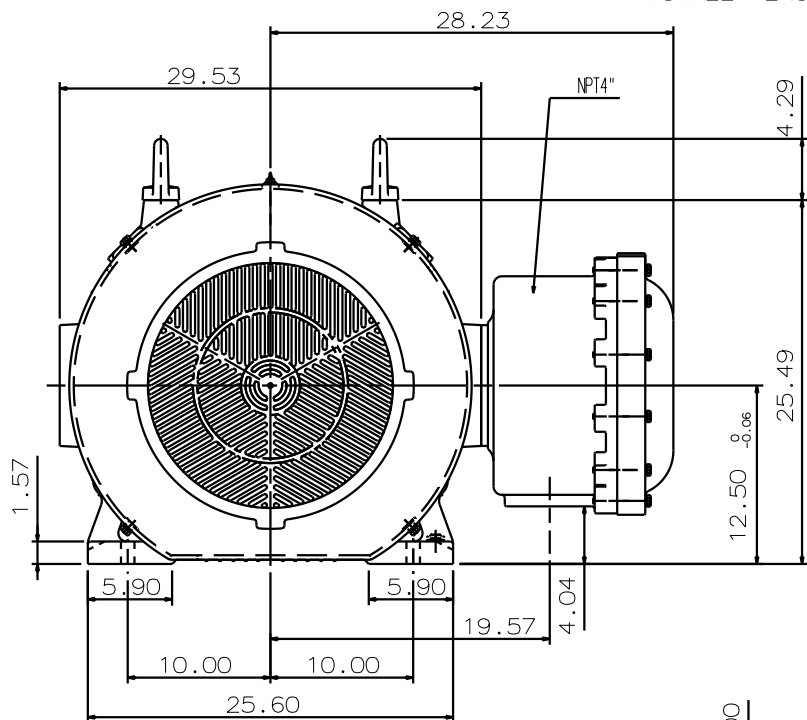


TYPE	OUTPUT		POLE	TIME RATING	VOLTAGE V	Hz	SYN. SPEED R.P.M
	HP.	kW.					
AEHHXU	200	149	8	CONT.	460	60	900

TOTALLY ENCLOSED FAN-COOLED TYPE. SUIRREL-CAGE ROTOR.



NOTE:

1. DIMENSIONS IN inch
2. FRAME NO.5007B
3. F CLASS INSULATION,S.F.1.15
4. FOR DIRECT FLEXIBLE COUPLING
5. ENCLOSURE: IP44
6. BEARING SIZE: DRIVE-END 6324
OPP. DRIVE-END 6320
7. UL EXPLOSION PROOF
8. WITH THERMOSTAT: N.C. 145°C 3PCS
9. NON-SPARKING FAN
10. MOTOR APPROX. WEIGHT: 3920lb

DATE	JANUARY 4, 2017	OUTLINE DIMENSIONS
CATALOG #:	XP2008	
DWG NO.	REV:00	XP2008

DWN.	R. SHEN	MAR. 21. 2016
CHKD.	Y. LEE	MAR. 29. 2016
APPD.	C. LIU	MAR. 29. 2016

TECO **Westinghouse**